

XPOS PLUS+

POS PC'S FUTURE



FEC
ITALIA
PC TOUCH

TECHNICAL FEATURES

General	
Processor	Intel® Core i3-12100 Quad-Core up-to 4.3 GHz TDP 89W, 5MB L2 Cache 12MB Intel® Smart Cache Intel® Core i5-12400 Esa-Core up-to 4.4 GHz TDP 117W, 7.5MB L2 Cache 18MB Intel® Smart Cache
Memory	x2 DDR4 SO-DIMM 8GB, MAX 32GB
Power supply	External AC/DC 20V 90W/130W
Integrated storage	1x M.2 128GB PCIe NVMe M-Key Gen III (256GB / 512GB / 1TB) Configurable in RAID 1 on project
WiFi	Optional (WiFi/Bluetooth) on external module Add-On
Mounting	VESA 100 / base / panel
Chassis	Aluminum alloy chassis + plastic, Galaxy Grey
Speaker	Internal 2x 2W
TPM	TPM 2.0: dTPM e fTPM
Fanless	Passive heat dissipation
Operative System	Windows 10/11 IoT, Win. 11 PRO, Linux Ubuntu
Video Section	
Graphical Chipset	i3/i5: Intel® UHD Graphics 730
Display	15,6" (16:9), 1920x1080 Slim Edges TFT FHD, 350 nits
Active Touch Area	350,41 x 200,4 mm (W x H)
Border Frame	↑ 5mm, ↓ 12mm, ← 5mm, → 5mm
MBTF Retroillum.	Minimum 50000 hours
Touch	10-Points Multi-Touch True-Flat PCAP suitable with work gloves usage
I/O Ports	
PC's I/O	
Video	1x HDMI 1x SMART DD
LAN	1x 10/100/1000/2500 Mbps Intel®I225-V GbE LAN RJ45
USB	1x USB 3.0 3x USB 2.0 Type-C (Add-On)
COM	1x RJ45, 1x RS232
Power supply	1x USB-C 100W DC-IN 9-36VDC
Base's I/O	
Video	1x USB-C DP
LAN	1x 10/100/1000/2500 Mbps Intel®I225-V GbE LAN RJ45
USB	6x USB 2.0
Alimentazione	1x DC-IN Jack 90W/130W
COM	1x COM
Altro	1x PUSB 24V
Sizes and Weight	
Sizes and Weight	360 x 230 x 275 mm (with base), 360 x 32,1 x 217,41 mm (without base) - (W x D x H) Weight: 5,2 Kg
Quality	
Temperatures	Operative: 0~40°C (32~104°F) Conservation: -20~60°C (-4~140°F)
Relative Humidity	Operative: 20~80% Conservation: 5~95%
Certifications	FCC, CE Class B, UKCA
IP	IP65

REV 09/24

FEC
ITALIA
www.fecpos.it

XMONITOR

Secondary monitor, it can be integrated into the back of the PC, four versions available:



- + XM-3010W: monitor 16:9 10,1"
- + XM-3010W: touch monitor 16:9 10,1"
- + XM-3015W: monitor 16:9 15,6"
- + XM-3015W: touch monitor 16:9 15,6"

XSTATION

I/O expansion connectable via USB



Single XT-100



Duo XT-200

BASE'S I/O



A base designed in every detail

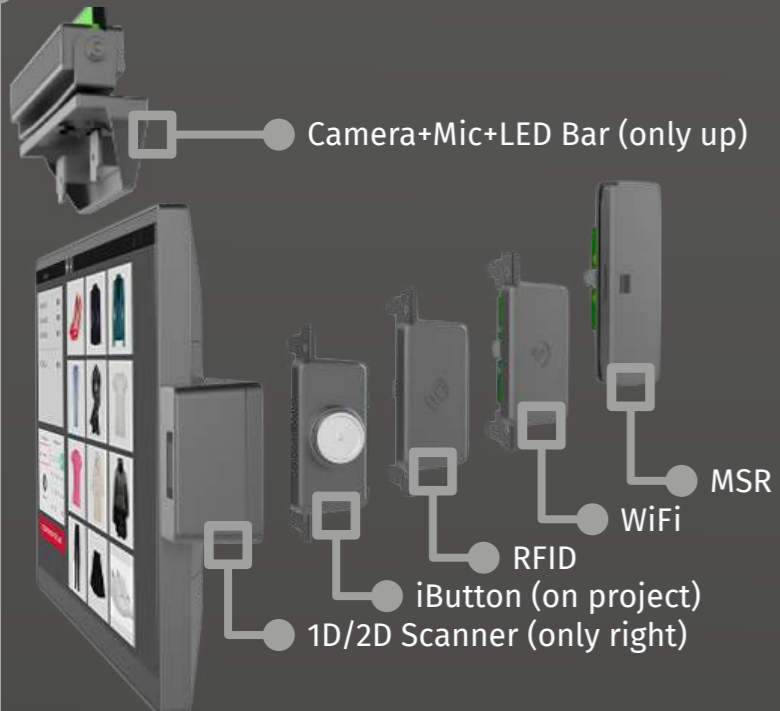
- + Easy and practical assembly
- + Back Panel PC's base cable routing
- + No visible screws for a clean and elegant look
- + Modern and attractive design
- + New quick-release base

A rich and functional I/O

- + 20V Power DC-IN
- + 1x USB-C DP
- + 6x USB 2.0
- + 1x PUSB 24V
- + 1x RJ45 GigaLAN
- + 1x COM



INTEGRABLE ADD-ONS



1D/2D ORIENTABLE SCANNER



DESIGN

The design of a consumer product with the robustness and reliability of a professional POS PC

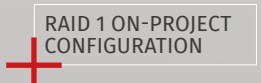
- + Modern and original aesthetics, Galaxy Grey color
- + Screen thickness 32.1mm, less than half of POS PCs on the market
- + Display orientability (tilt and rotation)
- + VESA mount ready for wall or pole installations



XPOS PLUS+ TECHNOLOGY



- + 12th Gen Intel® Core processors with fanless technology
- + Industrial grade 350 nits display with 50,000 hours of guaranteed operation
- + TRUE-FLAT capacitive multi-touch 10 simultaneous touches even suitable with work gloves
- + Ultra-resistant IP65 front tempered glass
- + Proximity and brightness sensor
- + RAID 1 on-project configuration



QUICK-RELEASE BASE

INTEGRABLE ADD-ONS

BRIGHTNESS AND PROXIMITY SENSORS

REMOVABLE SSD DISKS



NEW PATENT
BASE'S QUICK RELEASE
WITHOUT SCREWS

XSTATION NEW I/O MODULARITY



Connect all the peripherals you need without any problems

The XPOS base integrates the XSTATION, a module for peripheral connectivity management. This module can be separated or integrated and placed elsewhere (for example under the counter) or an XSTATION DUO module can be chosen for broader connectivity.

The XPOS back-panel I/Os are independent so that they can be integrated with different solutions, regardless of the presence of the base.



XSTATION: INSTALLATION

INTEGRATED XSTATION:
USB-C CONNECTION

EXTERNAL XSTATION:
USB-C CONNECTION

UNDER COUNTER INSTALLATION
TO OPTIMIZE SPACE

OUR FEC SWAP24 WARRANTY

A risk-free purchasing and usage experience

Repairing your XPOS PLUS+ will no longer be a problem with the **FEC SWAP24** assistance service.

The FEC SWAP24 service is included in the purchase price for the first 12 months. It gives the right to the early replacement (swap) of the faulty system with a regenerated one, subjected to a processing and control process to bring it back to a state of functionality equal to the new one, with simultaneous verification and possible repairs also from an aesthetic point of view, net of the disk that will be replaced with that of the faulty machine to guarantee absolute continuity of work without the need for long software installation processes.

The FEC SWAP24 warranty can be extended up to 3 or 5 years, further demonstrating the reliability of FEC Italia systems.



XPOS PLUS+ VERSATILE MOUNTING OPTIONS



GREAT INSTALLATION
VERSATILITY

ORIENTABLE SCREEN

Adjustable screen and double-jointed base for horizontal bench use

Slim Flat

XPOLE

Single and double-jointed poles for the installation of orientable secondary displays

SMART DD
USB-C
XSTATION

VESA Mounting Kit

VESA 100 mounting kit for mounting the POS PC on third-party poles or wall mounts

Whatever your cash point is, XPOS PLUS+ has the right configuration for you

XPOS PLUS and XSTATION are extremely versatile and allow you to configure the cash point according to the most diverse needs, ensuring optimal integration with the installed devices and more space at the cash point.



FEC PLATFORM REMOTE MANAGEMENT PLATFORM

We have developed a service platform to make the professional user experience of FEC Italia's Panel PCs even more complete.

- FEC Remote Management Platform is:
- secure thanks to its IT security protocols
 - compatible with Windows 10 or later / Android® 7 or later operating systems
 - easily integrated with other monitoring platforms and management systems.



FEC PLATFORM COMPREHENDS:

CIRA Edge

A runtime client installed by default on Panel PCs that collects all information on the system's functioning: serial number, model, installed software, hardware, and BIOS.

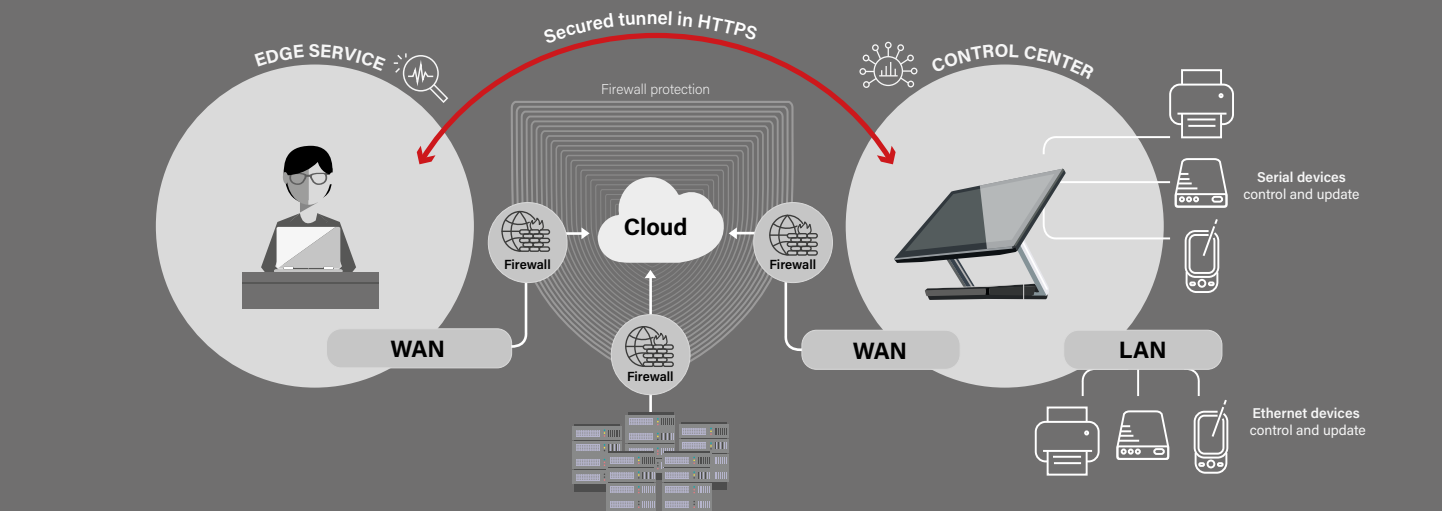
NUBIS Control center

A cloud based application that allows remote control of many key activities.

NUBIS Storage

A cloud space to share documents and updates between PCs in the same or different plants.

A SECURE CONNECTION FOR REMOTE ASSISTANCE



- Edge and Control Center connect via an HTTPS encrypted tunnel linking to ensure maximum IT infrastructure security. Through the control center, it's possible to:
 - remote assistance for:
 - monitor anomalies and malfunctions
 - understand what happened
 - remotely intervene on the fault
 - setting and Alert management for:
 - PC's high temperature
 - full disk
 - available updates
 - scheduled actions management: for example, updating the system, at predefined times, without interrupting the regular operation of the machine during operating hours.