



PP-9715 | PP-9715W

Panel PC all-in-one performance
Modular system ideal for retail
application, MES and digital signage.

PP-9715 is an all-in-one POS PC touch screen, 15" or 15,6" display; ideal for applications that require high computing performance for retail or restaurants management and other vertical markets, not least production advancement and general factory control..

Based on high performance CPU Intel® Core, is suitable for complex solutions with reduced energy consumption. The system can be equipped with SSD eliminating moving mechanical parts and increasing the overall reliability of the solution.

The system is based on back panel electronic that allows the use of the Panel PC both taking advantage of the solid and extremely stable base, and for wall/arm mounting thanks to the standard VESA connection in the back of the PC. Display is easily removable from the central unit for both maintenance or replacement with larger displays (22" or 32") .

Designed to reduce footprint with a compact chassis, through a careful design study, offers a rich I/O section with optional Wi-Fi connectivity integrated.

ALUMINUM CHASSIS, POWER AND SAFETY

New PP-9715 | PP-9715W combines robustness and performance thanks to the aluminum chassis and the mother board based on Intel® Core i3 9100TE 6M and Core i5 9500TE 9M with low dissipation and reduced consumption.

The system ensures high performance in terms of process speed and graphic functionality, while maintaining low power consumption and quiet operation thanks to the integrated active cooling system.

It has a standard 4GB DDR3 RAM, expandable up to 16 GB and can be equipped with easily replaceable SATA III SSD or M.2 PCIe.



TRUE FLAT DISPLAY AND MOUNTING OPTIONS

The 15" or 15.6" TFT LCD display is equipped with true flat technology, with no steps between the active touch area and the frame.

The capacitive multi-touch screen with 10 simultaneous touches ensures a remarkable touch fluidity in addition to the strength of the protective IP65 certified glass, resistant to dust and liquids. The built-in ambient light sensor allows system automatically adjust the brightness of the screen according to the environment.

PP-9175/9175W can be used on desk or mounted on arm, wall or totem thanks to the VESA 100 mount on the back of the PC.

The die-cast aluminum chassis ensures high stability of the system, the solid support base allows a wide angle of inclination and ensures stability to the touch.

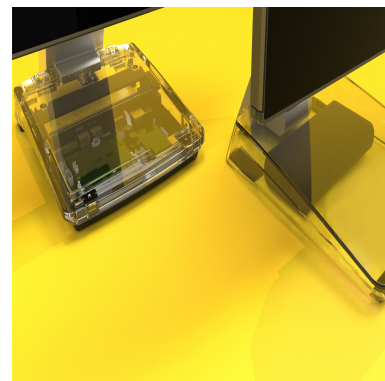


I/O PORTS

PORT:

- 1 x Video Port
- 1 x PUSB 24V
- 1 x FEC I/O (Reserved for additional DC output 5V/12V/24V, USB, or Com ports)
- 1 x USB DP / FEC DD (Select by BIOS)
- 3 x RJ45 (COM 1, COM2, Com3) RS232
- 4 x USB Type A (2 x USB 2.0, 2 X USB 3.0)
- 1 x RJ45 GigaLAN

Hidden adapter in base or customized I/O (by project).



Technical Sheet

General

Processor	Intel® Core i3 o Core i5, Celeron	Speaker	Integrated 2 x 2 W
Base memory / max / n. socket	4GB / 32GB (standard option) / 2 memory sockets	WiFi	Opzionale b/g/n with internal antennas
Power source	20V / 130W External Adapter	Wall Mount	VESA 100 Predisposition
Integrated storage	SSD SATA III 128 to 512 GB	Additional storage	SSD SATA III 128 to 512 GB (optional)

Video

Size and Resolution	15" 1024 x 768 or 15,6" 1920 x 1080	Touch Screen	Capacitive 10 contemporary touches
Brightness	300 nits (15,6") 400 nits (15")	IP Protection	IP 65 (front)
Graphic chipset type	Intel HD graphics		

I/O Ports

Serial ports	3 x RJ 45 5-12 VDC selez.	Expansion Slot	1x M.2 E Key 802.11ac + BT
USB ports	6 di cui 3x USB 2.0, 1x USB 2.0 24VDC e 2xUSB 3.0	Video ports	1 HDMI, 1x USB DP
Change-maker ports	1 RJ11 12/24 VDC		
LAN ports	1 x RJ45 GigaLAN		

Dimensions and weight

Dimensions (W x H x D)	368 x 272 x 315 mm (15,6") 342 x 310 x 342 mm (15")	Weight	Net. 3.92 kg
------------------------	---	--------	--------------

Operating Systems

Windows	Windows 10 SAC / Pro / LTSC / 11	Linux	UBUNTU
---------	----------------------------------	-------	--------

Accessories

MSR reader	Optional integrable side display magnetic cards tracks ISO 1-2-3	Keyboard and mouse	Optional via USB (mini or standard size)
RFID reader	Optional integrable side display MF320U (USB) 13,56 MHz or 125 KHz ISO 14443 A/B		
Other readers	Optional i-button reader/ Dallas key		

Quality

Certificazioni CE, RoHS...	<ul style="list-style-type: none"> - Directive 2014/35/UE (LVD) - Directive 2014/30/UE (EMC) - Directive 2011/65/UE (RoHS II) and subsequent modifications introduced with the Delegated Directive 2015/863/UE (RoHS III) - Directive 2009/125/CE Ecodesign - Ruling (EU) No. 617/2013
----------------------------	---

Warranty

Standard	12 months SWAP24	On-site	on-site extensions upon request 3 working days
Optional	extensions up to 5 years SWAP24		